

CARPLAY WIRELESS ADAPTER FOR IOS - USB, USB-C



Note: Please make sure your car supports wired carplay. The required iOS is iOS 10 or above.

How to check if your car supports the Apple CarPlay function:

Connect your iPhone to your car using the USB cable and check whether the CarPlay logo appears on your car's display.

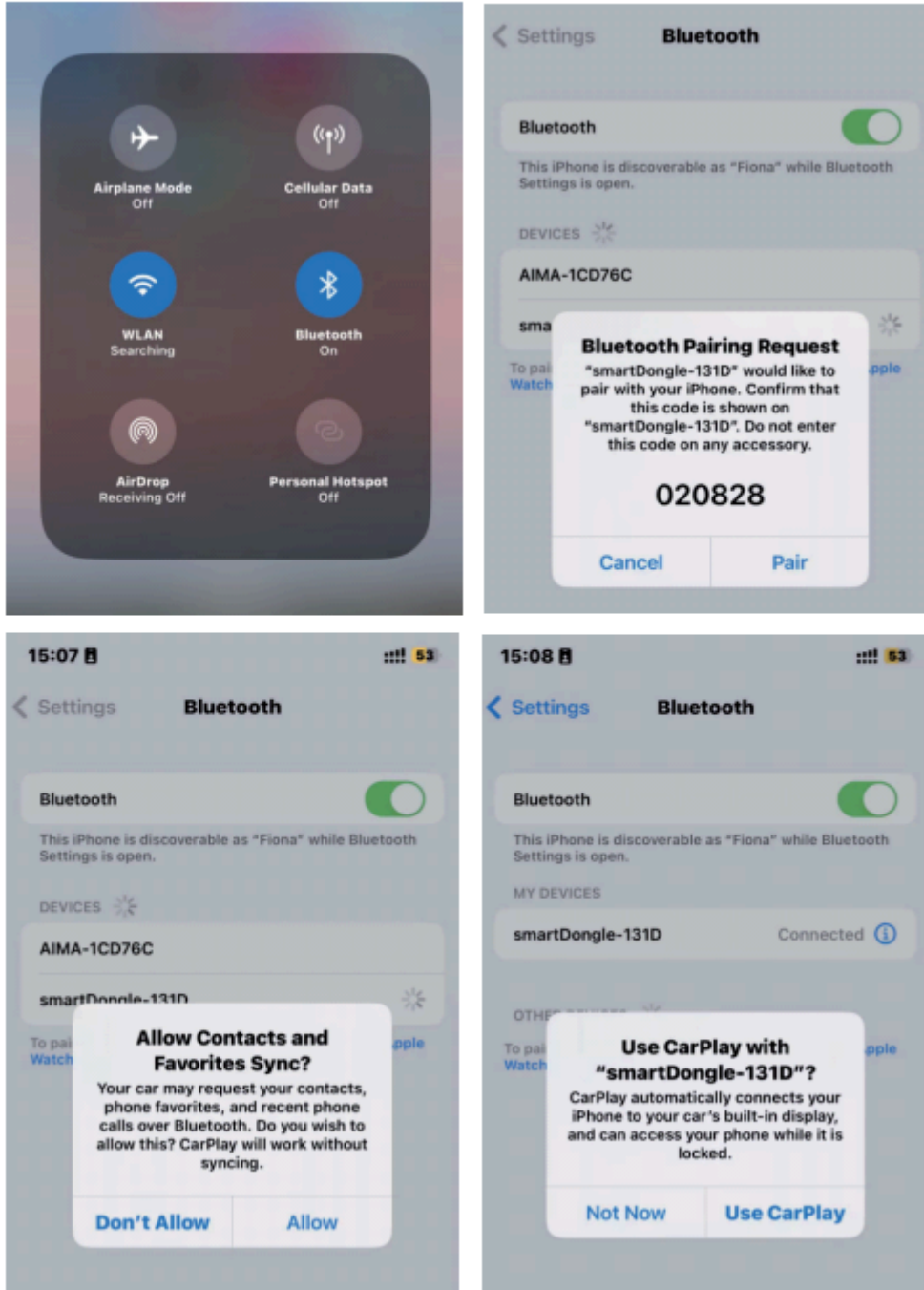


Check the compatibility by scanning the QR code below, or check with your car manufacturer.



How to connect your CarPlay

1. Start the car
2. Connect the Wireless CarPlay Adapter to the USB-A or USB-C port of your car.
3. Please plug in the adapter into the port dedicated for wired Apple CarPlay.
4. Turn on the WiFi and Bluetooth on your phone. Search for the Bluetooth device named "smartDongle". Click on "Pair", "Allow", "Use CarPlay". See picture below.



5. Your CarPlay is now connected and ready for use.

The wireless CarPlay adapter uses Bluetooth to establish connection between the phone and the vehicle. After the successful pairing, it switches to the WiFi to maintain stable connection and disconnects from Bluetooth by default. Please make sure the wireless CarPlay adapter blue light is on.

FAQ

1. What is the WiFi password for wireless CarPlay adapter?
You don't need a password. The phone connects to the carplay via Bluetooth and then automatically switches to WiFi.
2. Audio input/output issues: calls being rejected or forwarded to voicemail / there's no sound / microphone is not working / music playback is interrupted or paused.
Please check your iPhone's Bluetooth and make sure it is not connected to any other device.
During a call, please ensure your Audio output is set to CarPlay.
3. The blue indicator light is on even if the CarPlay is turned off.
The adapter won't shut down immediately, it will take a while, but rest assured the energy consumption is minimal.
4. Is it possible to use another WiFi while using the CarPlay?
No. You can only use your phone's data. You need to stay connected to the CarPlay in order to use it.
5. Unable to automatically reconnect.
Please ensure both Bluetooth and WiFi are turned on, and the Bluetooth is not occupied by some other device.
Delete paired Bluetooth connection and try to pair again.
6. Can the Wireless CarPlay Adapter be paired with multiple iPhones?
It can be paired with a maximum of 5 iPhones, but only one device can be connected at a time. If you want to pair it with another iPhone you must disconnect the CarPlay from the current device.
Please note that this adapter will automatically reconnect to the last used phone.
7. Can't find the Bluetooth and WiFi of the CarPlay adapter?
Please make sure the CarPlay indicator light is on, and that the CarPlay is plugged into the corresponding port in your car.

Online update

If the adapter works properly it means it is suitable for your car and it is not recommended to update the firmware. Try this solution only in case none of the steps from FAQ is not helping.

1. Turn on the adapter
2. Connect to the adapter's WiFi (the password is 88888888)
3. Open Safari and enter 192.168.1.101 to enter settings page and then click "update"
4. On the same page you can also fill in the car brand, model, year and other details. When you finish, click "submit" to report the issue. Our engineers will record your problem and try to find the solution.
5. If the problem still occurs after the upgrade, please restore to factory settings.

Problem Description

Car Make E.g. Toyota

Model Name E.g. Camry XLE

Year E.g. 2020

Detailed description of the problem:

Please enter text here

Submit

Online Update

New version is available
23060310.1345.2

Update