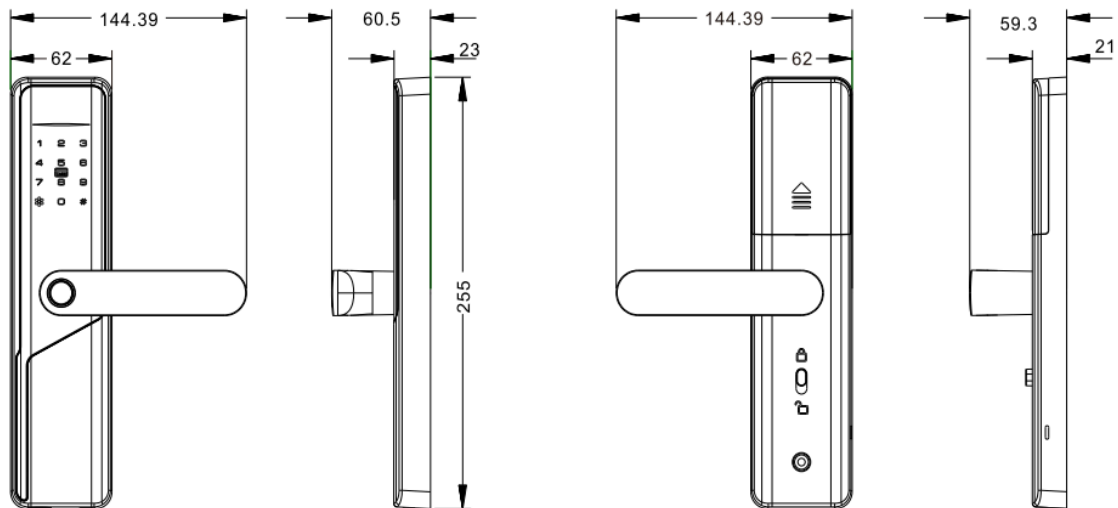


# **A1 Tuya WiFi Fingerprint Smart Door Lock with Dynamic Passwords and NFC**

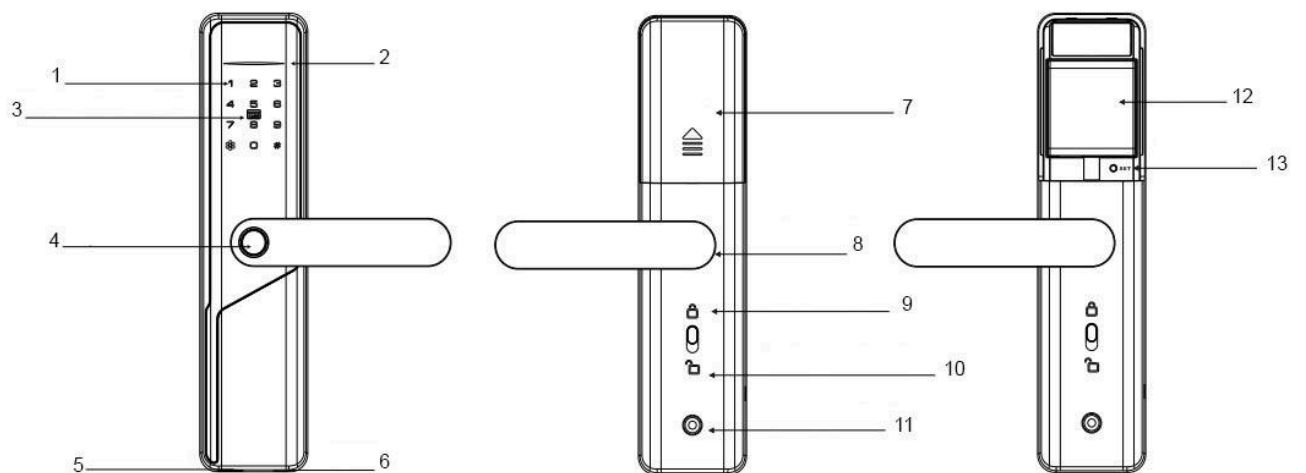


## Product Overview

### Dimensions (mm):

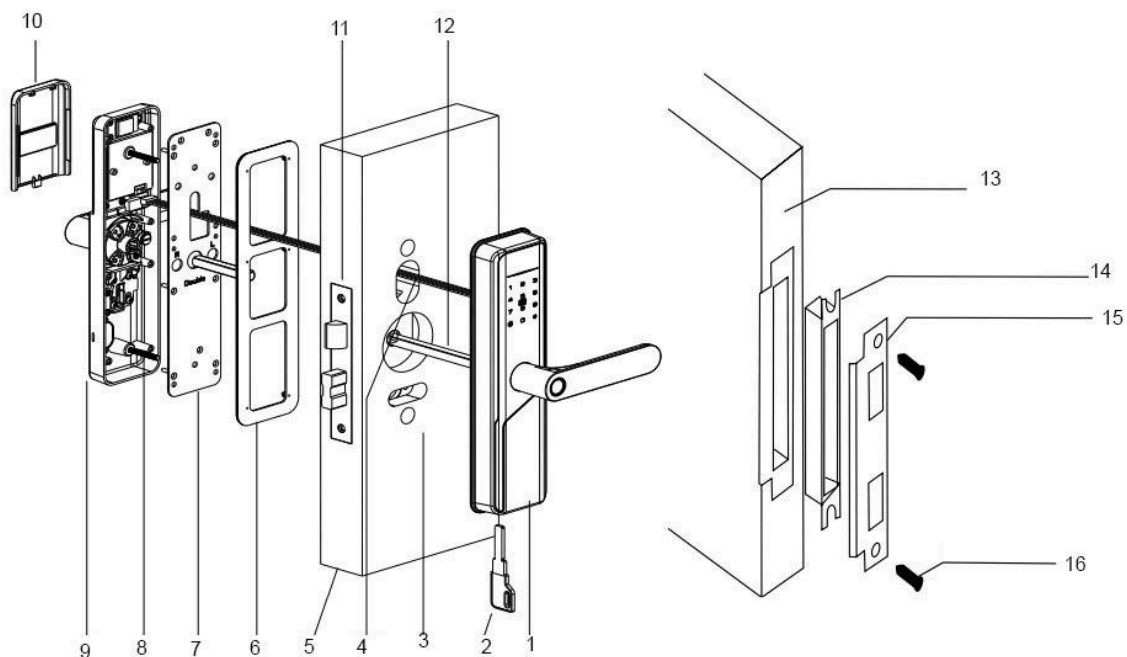


### Component Overview:



1. Keypad
2. Status LED
3. RF-card reader
4. Fingerprint sensor
5. Emergency key slot
6. USB
7. Battery cover
8. Lever handle
9. Internal locking
10. Internal unlocking
11. Mounting screw point
12. Battery tray
13. Reset pin-hole

### Installation Diagram:



1. Exterior lock module
2. The key
3. Threaded mounting post
4. Ribbon / power cable
5. Door leaf (drilled holes shown for reference)

6. Silicone gasket to seal the front unit
7. Steel reinforcement plate
8. Fixing (set) screw
9. Interior lock module
10. Battery cover

11. Mortise latch / lock body
12. Square spindle shaft
13. Door frame
14. Strike box / mortise pocket
15. Strike plate
16. Fixing screw

## Installation steps

### Latch-bolt orientation adjustment:

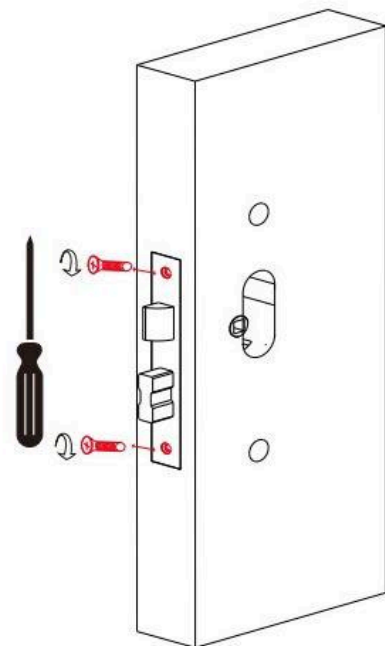
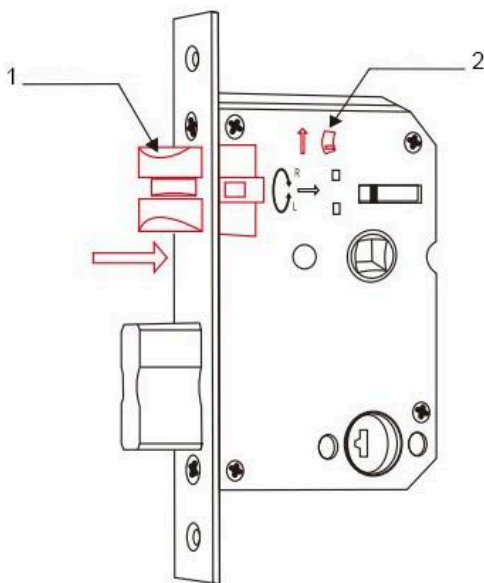
Use this procedure when you need to flip the latch so the bevel faces the opposite direction (e.g., left-hand to right-hand door):

1. Eject the latch bolt
  - Insert a flat screwdriver into the slot and push the latch tongue outward until it clicks free.
  - Rotate 180 °: Turn the latch bolt half a turn so the bevel faces the correct side of the door.

3. Re-engage the bolt

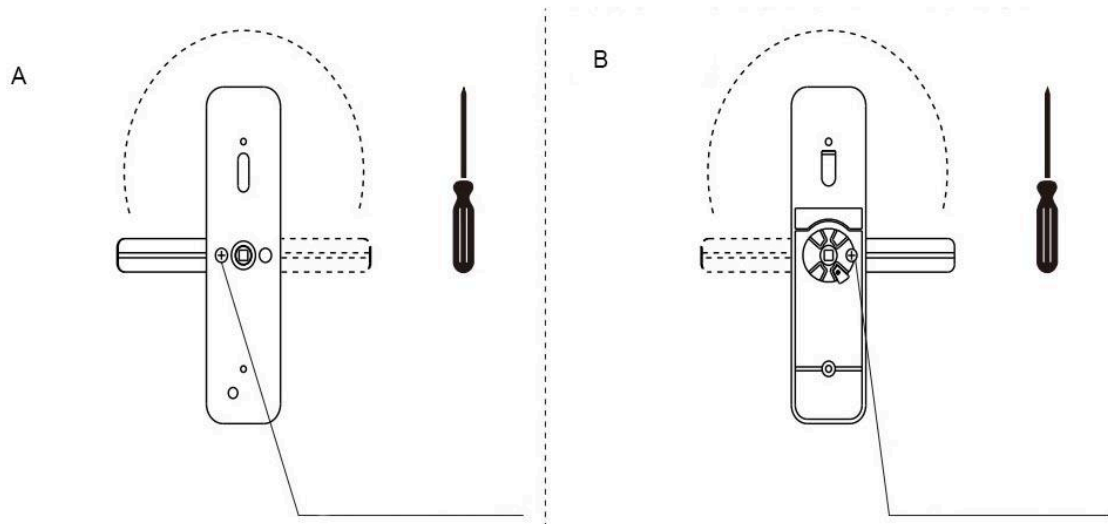
- Push the latch straight back into the lock body until it snaps in place.

Tip: If the spring clip (buckle) lifts as you push, that's normal—it releases the latch; press it back down after the bolt is seated.



### Handle reversing diagram:

- A. Front lock: Rotate the handle 180° and fix the screw.
- B. Rotate the handle 180° and fix the screw



### Install the threaded mounting posts:

1. Locate the two through-holes on the rear of the exterior lock module.
2. Hand-start the posts (red in the diagram) into these holes, then tighten with a screwdriver until they sit flush.  
These posts will later pull the inside bracket firmly against the door.

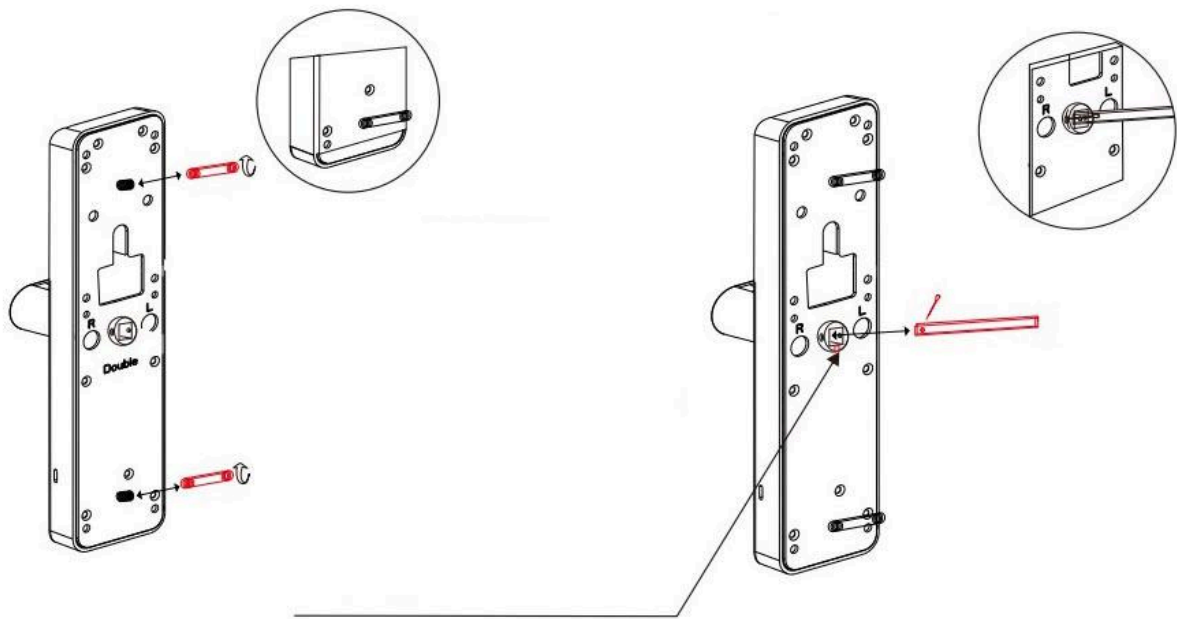
### Insert the square spindle and retaining pin

1. Slide the square spindle through the hub in the latch until it projects evenly on both sides of the door.
2. Align the mark on the spindle with the correct letter stamped on the lock body:
  - “R” = right-hand door, single-latch model
  - “L” = left-hand door, single-latch model
  - “Double” = double-latch model

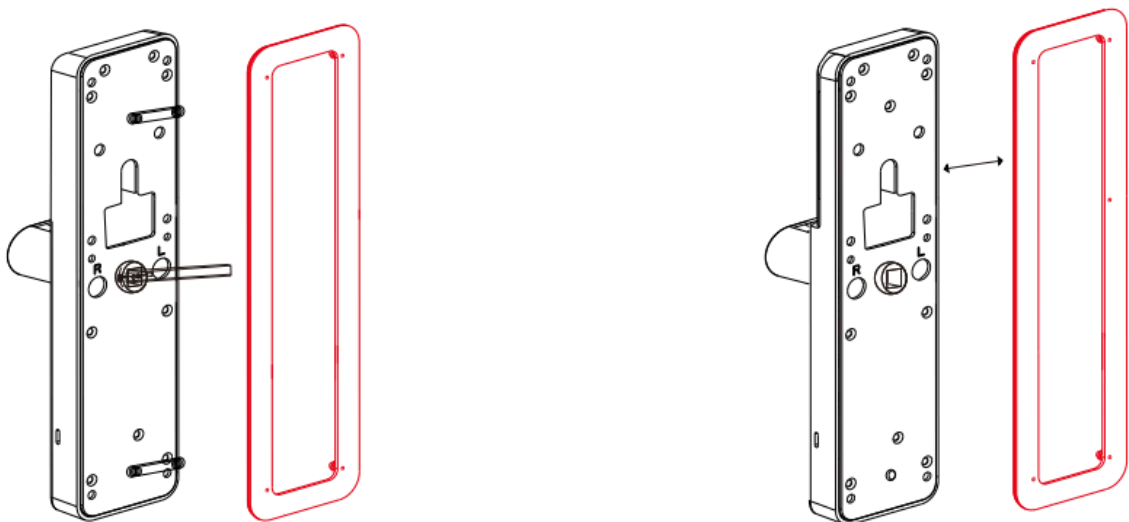
3. Secure the spindle by pushing the small fixing pin through the cross-hole (see zoom-in).

*The pin prevents the spindle from sliding out when the handles are turned.*

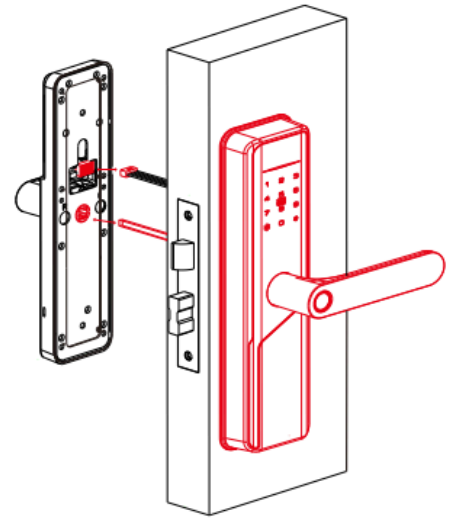
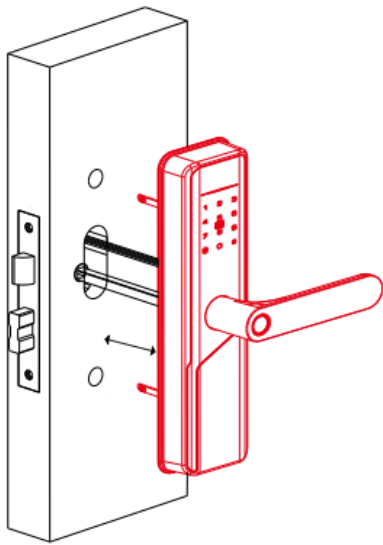
With the posts and spindle in place, the front unit is now ready to be joined to the interior mounting plate in the next step.



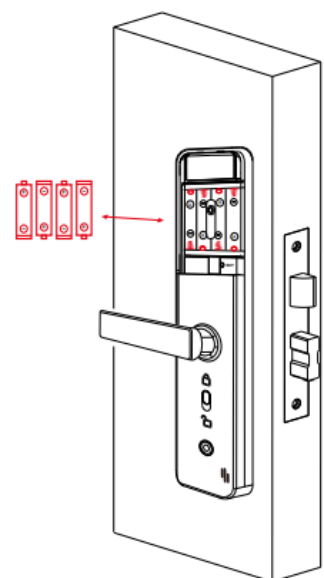
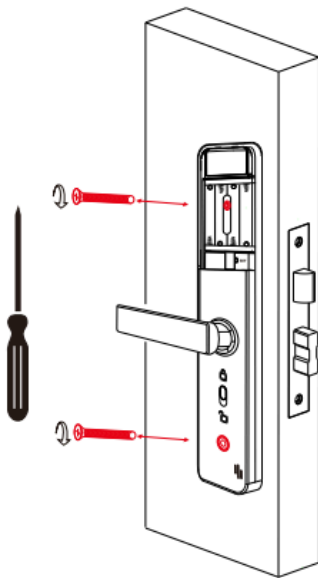
**Apply the front and rear sealing gasket:**



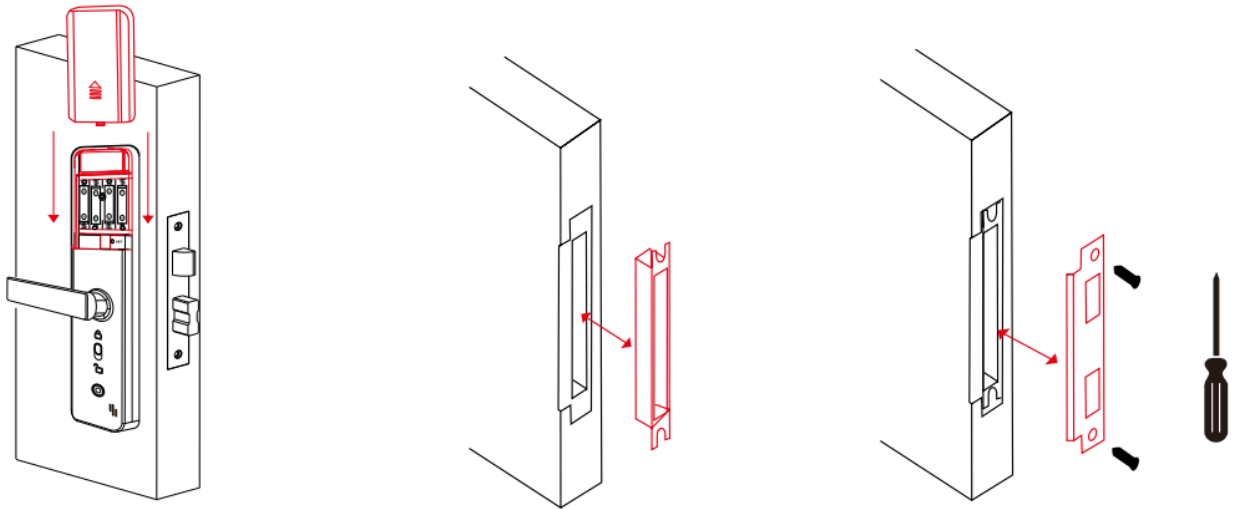
**Mount the exterior (front) panel and attach the interior (rear) panel**



**Tighten the through-bolts and insert the batteries**



**Fit the battery cover, install the strike box and secure the strike plate**



### **Fingerprint sensor**

Enroll each fingerprint from several angles.

Place the same finger on the sensor 5-6 times, rolling it slightly each time so the reader captures the tip, center, left edge, right edge and base. This multi-angle scan ensures fast, reliable recognition.





## Operating logic & keypad keys

1. Administrator credentials: The \*master\* fingerprint, PIN or RFID/IC card you register first.
2. User credentials: Any additional fingerprints, PINs or cards you add later (including the administrator's)
3. "\*" key: Clear / Back – erase the current entry or step back one menu level
4. "#" key: OK / Confirm – finish an entry or confirm a menu choice

Factory-default state – Before an administrator is programmed, the lock will open with \*any\* fingerprint, any IC card or any numeric code of six digits or more.

Secure state – After you enrol the first administrator credential, \*only\* registered fingerprints, cards or codes will unlock the door.

Function menu – Use the administrator credential followed by "#" to enter the settings menu and manage all lock functions.

## Administrator Menu

Enter the menu with \* # + administrator PIN (default 123456), then follow the voice prompts. Use \* = back/clear, # = OK/confirm.

**Administrator settings: Press 1, then the following keys to enter the settings:**

Key	Action	Notes
1	Add / change admin credential	Scan fingerprint / card or type new PIN, then press # to save
2	Delete current admin	Removes the stored admin credential

**User settings: Press 2, then the following keys to enter the settings:**

Key	Action	Notes
1	Add user	Enroll fingerprint / card / PIN, press # to confirm
2	Delete user	Press 1 to delete the selected user, or 2 to delete all users

**System settings: Press 3, then the following keys to enter the settings:**

Key	Action	Options
1	Set time & date	Enter YYYY MM DD HH MM then #
2	Voice language	1 = Chinese, 2 = English
3	Voice volume	1 = Low, 2 = Medium, 3 = High, 4 = Mute
4	Passage (always-open) mode	1 = Enable, 2 = Disable
5	Dual-authentication mode (fingerprint + PIN or card)	1 = Enable, 2 = Disable
6	Anti-pry alarm	1 = Enable, 2 = Disable
7	Event log query	Plays back the latest unlock records

**Networking settings: Press 4, then the following keys to enter the settings:**

Key	Action
1	Start Wi-Fi/Bluetooth configuration
2	Turn off networking configuration
3#	Turn off networking configuration

## **Additional Safety & Maintenance Notes**

### **1. Lock-out after repeated failures**

If five consecutive invalid fingerprints, PINs or cards are entered within a 5-minute window, the lock activates a 90-second lock-out. During this time no further attempts are accepted.

### **2. Anti-peep PIN entry**

To prevent shoulder-surfing, you may disguise your PIN by adding random digits before and/or after it (e.g., 123•PIN•456). Press # to confirm; the lock will ignore the extra digits as long as the correct PIN appears in sequence.

### **3. Auto-exit**

The programming menu closes automatically after 10 seconds of inactivity.

### **4. Low-battery warnings**

When the battery voltage falls below 4.8 V, the lock beeps each time it is opened. About 100 more unlocks remain; after that, each unlock is delayed by 5 s. Replace the batteries well before this limit.

### **5. Factory reset**

Press and hold the SET (reset) key for 6 seconds to restore factory settings.

## **Pairing the Lock with the Tuya Smart App**

Follow the four phases below to register, add, and control your smart lock via Tuya Smart (Android / iOS).

Phase A – Install & register:

1. Download Tuya Smart from Google Play or the iOS App Store, then install
2. Open the app, tap “Register”, and create an account with your mobile number or e-mail.
3. Log in; the home screen will appear

Phase B – Put the lock in pairing mode:

1. On the lock keypad enter \* # + **admin PIN** (default 123456).
2. Press 4 to open Networking Settings
3. Press 1 to Start networking configuration
4. The 5-key begins flashing, indicating the lock is ready to pair

#### Phase C – Add the device in Tuya Smart:

1. Tap the “+” icon (top-right) → Add Device.
2. Choose Smart Lock from the list; the app scans and finds the lock.
3. Tap the detected Smart Lock → Next.
4. Select a 2.4 GHz Wi-Fi network, enter the password, tap Next.
5. Wait for “Lock added successfully”, then tap Done.

#### Phase D – Remote functions: Once connected you can, from the lock’s device page.

1. Wake the lock (tap the lock icon) → Unlock → Confirm to open remotely
2. Generate a One-time Dynamic PIN (valid for 5 minutes) and send it to a visitor
3. View event logs and battery level.

Tip: If pairing fails, reset Wi-Fi on the lock (repeat Phase B) and ensure your phone is on a 2.4 GHz network—not 5 GHz.