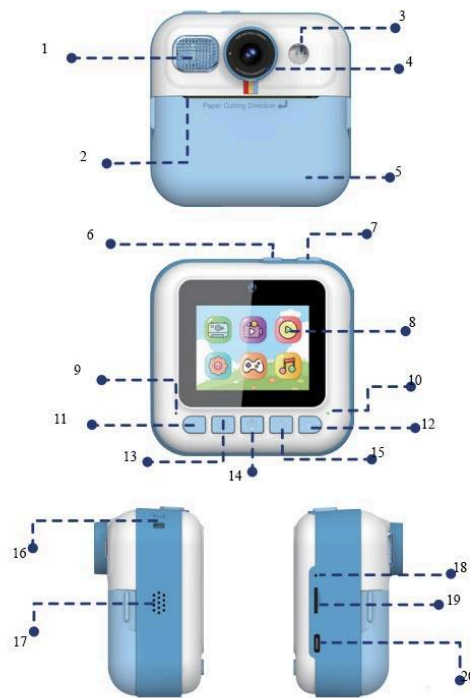
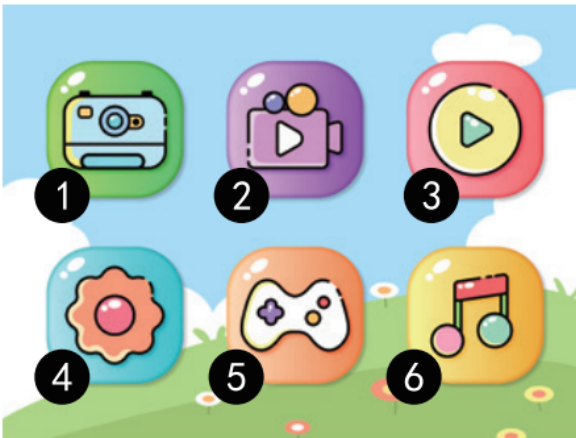


CP02 Kids HD Digital Camera with Thermal Printer & 32G TF Card





1. Flash light
2. Printer output slot
3. Back vision reflector
4. Rear camera
5. Paper compartment
6. On/Off - Flash light On/Off
7. Shutter button / Camera and video shift
8. 2.4 inch IPS screen
9. Microphone
10. Indicator light
11. Left
12. Right
13. Return
14. Print mode shift / Print on/off / Down in game
15. OK / Up in game
16. Lanyard hole
17. Loud speaker
18. Reset
19. SD card slot
20. Type-C port



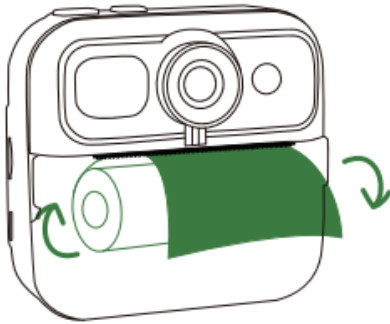
1. Camera
2. Video
3. Playback
4. Settings
5. Games
6. Music player

Main Menu

Attention

1. Keep away from fire when using.
2. Children should be supervised by an adult while using or charging the device.
3. Please use a 5V/1A USB adapter to charge.
4. Before cleaning the camera, ensure that the power supply is disconnected.
5. Built-in battery, not removable or replaceable. If damaged, contact the merchant for support assistance.
6. The camera has built-in color images and filters, but this device only performs black and white thermal printing. Photos saved to the micro-SD card will retain the colors displayed on the camera display.
7. This device is thermal printing. In the low temperature environment, there may be no clear printing, it is recommended not to install the printing paper, print more than 20 times, preheat the print head, and then install the printing paper to see whether it can print normally.
8. Because of the thermal printing technology, the effect of printing will be gradually reduced over time. To make printed photos last longer, keep them away from high temperatures or direct sunlight.

Loading and cutting the print paper



1. Open the paper compartment. Insert the roll of thermal printer paper (57mm x 25mm) into the paper compartment, ensuring the roll is facing the same direction as shown in the image below.

2. Fit the roll and make sure some of the paper is feeding out through the slot, then close the paper compartment and tear off the excess paper exposed on the outside.



Paper cutting direction

WARNING: Wrong direction of installing the print paper will result in the inability to print.

Operation

Camera

1. Long press the power button to power on or off.
2. On the Home interface, select the photo icon. Press OK to enter the photo mode. Long press the camera button to switch the video recording function.
3. Short press the print button to switch the print mode. You can take photos and print. Press and hold the Print key to turn on or off printing.
4. Long press the print button until the print icon on the screen disappears. After shutting off the print mode, press the Right button to enter continuous shooting/timed photography, and press the Left button to enter the sticker/photo frame/filter function.
5. Long press the Left and Right button to adjust the Digital Zoom.
6. On the Photo interface, short press the power button to shut on or off the Flash Light function.

Video recording



1. In Video Recording Mode, short press SHUTTER button to begin and end the video recording.
2. Long press the Shutter button to shift the Photo and Video Recording functions.
3. On the Video Recording interface, short press the power button to shut on or off the Flash Light function.
4. Before starting the Video Recording function, you must insert an SD card.

Playback



Press OK to get into the Playback, press the Left and Right key to browse the previous and next one.

Long press Return button, choose Delete Current or Delete All to delete photos.

Music



1. Short press Left button to switch to the previous song, and right button to next song.
2. Long Press Left and Right button to adjust volume Left or Right.
3. Press OK button to pause music play. The music function only will be realized after inserting the SD Card.

Note: This device does not have built-in music. Users need to connect to a computer, create a folder named “MP3” in the memory card, and then copy music in MP3 format into the folder.

Games



Choose the icon of Game, and press OK to enter Games Function.

Settings

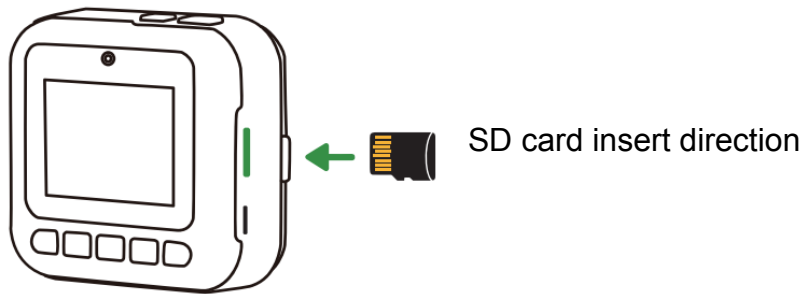


- Resolution
- Photo size
- Loop recording
- Video rate: normal, slow, fast

- Print mode: gray print, dot print
- Print quality: high, middle, low
- Printing density: high, middle, low for all kinds of printing paper on the market pairing, to ensure the best effect
- Language
- Date / Time: press Left and Right button to set the numbers, and OK to confirm it
- Date stamp: on/off
- Screensaver / Auto power off / Volume / Bright / Format/ Default setting / Version

Installing micro SD card

The SD card slot is at the side of the camera. To eject the card, push inward.



Charging the camera

Insert a Type-C cable into the charging port at the side of the camera, and connect the other end into a USB power adapter (5V/1A). Once power is connected, the camera will begin charging.

The indicator light is red + blue while charging and fully charged.

The indicator light is blue when turned on.

The camera will give a low battery prompt when further charging is required.

Delete

- In the Playback Menu, select saved images or videos.
- Hold the Return button for 2 seconds to bring up the Delete option. Use the Left and Right buttons to select OK or Cancel.
- Press the OK button while OK is selected to delete the selected image or video.

Reset hole

- If the camera becomes non-responsive or shows difficulty operating, use a pin end to press the reset hold, then restart the camera again.
- Full charge, but cannot switch on, use a pin end to press the reset hold, and charge 5 seconds to the active camera.

Powering on - Once fully charged, press the Power button once to turn the camera on. By default, it will start in Photo mode, with the rear lens.

Printing

- Press the Shutter button to take a photo. In this setting, the photo will immediately print out.
- Printing from the album:
 - Press the OK button to enter the Playback menu.
 - Press Left and Right buttons to select the image.
 - Press the Print button then press OK to confirm to print it.
- Can't be printed during the charging period.
There are grey printing and dot printing 2 printing mode for choice, in photo mode, short press the Print Button to shift Dot Printing Mode and Grey Printing Mode; long press the Print Button to Turn On or Off the printing function.

Troubleshooting

The camera will not turn on even when fully charged.

- Reset switch is engaged in the OFF position.
- Use a pin end to press the reset hold, and charge 5 seconds to active it.

Photos and videos aren't saving even though I have a micro SD card inserted.

- The installed micro SD card exceeds 32GB.
- Use a smaller capacity micro SD card.

The paper roll is getting jammed when trying to print.

- 1. The printing paper is installed in the wrong direction. 2. The printing paper is too loose. 3. The printing paper is going to run out. 4. The printing bin lid is not well-closed.
- Check whether the printing is installed in the correct direction, roll the printing paper tightly, and check whether the printing bin lid is well-closed.

The image prints out too light / too heavy. Poor printing quality.

- Printing settings not refined in settings menu.
- Refer to Settings - Printing Quality and Print Density to adjust as required.

Printing is not clear.

- The temperature of the printing environment may be too low, the printing technology is thermal printing, and the printing head needs to be preheated first.
- Need to print more than 20 times, preheat the print head, and then print.

Untearable paper.

- The tearing direction is incorrect.
- Follow the directions and tear the paper downward.

Specifications

Product description - Children Digital Printing Camera

Model number - CP02

Screen - 2.4 inch / IPS Screen

Function - Take photo, printing, video record, music player, games and settings

Games - Yes

Battery capacity - 1500mAh Li-on rechargeable battery

Charging time - 2-3 hours

Standby time - 4-5 hours

Input rate - DC 5V/1A (Type-C)

Rated power - 2W

Max. extend storage - 32GB

Suitable age - 3 years old +

Camera size - 89.6 x 86.6 x 44mm

Material - ABS silicone

Max. SD card capacity - Max. to 32GB (not included)

Paper roll size - 57 x 25mm

Printing color - Black and white