

Wireless Android Auto Adapter with Video Streaming 020-7++



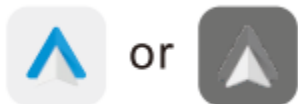
Compatibility note

- Please make sure your car supports wired Android Auto.
- Required an Android smartphone that supports Android Auto function.
- Required Android 11 or higher of the Android operating system.

How to confirm if your car has Android Auto function

Method 1:

Connect your Android Smartphone to your car by USB data cable and see the Android Auto logo on your car display.



Method 2:

Check the compatibility list below or check with your car manufacturer to see if your car has this capability:



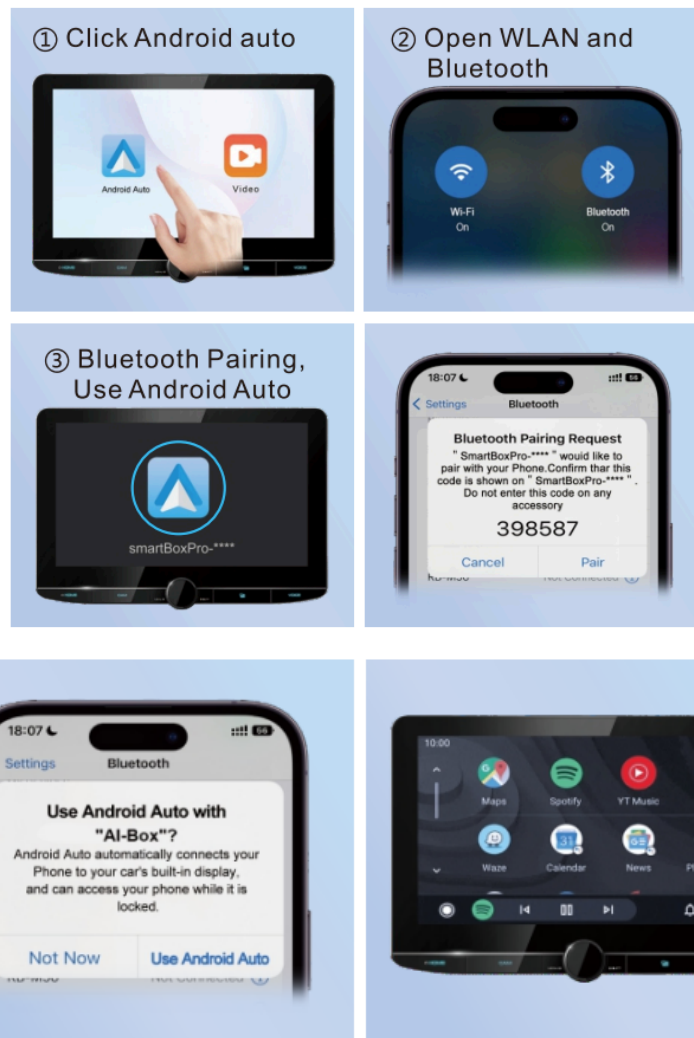
Check out the website for supported car models:

<https://www.android.com/auto/compatibility/#compatibility-vehicles>

1. The Wireless Video Android Auto adapter will automatically restart to adapt to the resolution of the original car screen, when connected for the first time.
2. The wireless Android Auto adapter working principle uses Bluetooth to establish a pairing between the Android smartphone and the vehicle, then switches to using WiFi to maintain the wireless connection. After the Bluetooth pairing is successful, the Android smartphone WiFi will automatically connect to the adapter's WiFi.
3. Please ensure wireless Android auto Adapter power indicates blue light is on.
4. Please ensure that your car models supports wired Android auto

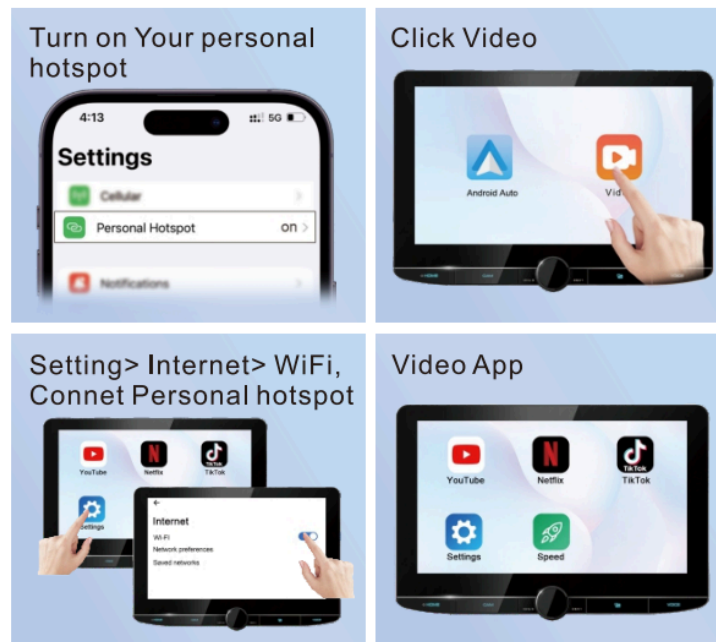
How to use for wireless Android Auto

1. Start the car and wait for the car head unit system to be loaded
2. Connect the Wireless Android Auto video adapter to the USB-A or USB-C port in your car. Please be sure to plug the adapter into the port that is for wired android auto.
3. Open WIFI and Bluetooth on your Android smartphone and find the Bluetooth named “smartBoxPro-****”; Click on 'Pair'; Click on 'Allow'; Click on 'Use Android Auto’.
4. Click the “Android auto” icon to enter the android auto Function page.
5. You are ready to enjoy your wireless android auto adapter.



How to use for YouTube/Netflix/ TikTok...

1. Start the car and wait for the head unit system to be loaded.
2. Connect the wireless android auto video adapter to the USB-A or USB-C port on your car. Be sure to plug the adapter into a port for wired android auto.
3. Turn on your Smartphone personal hotspot or other WIFI supported device.
4. Click the "Video" icon to enter the video page, choose what you want to watch video APP.
5. You are ready to enjoy YouTube /Netflix/ TikTok...



FQA

Does it support wireless Android Auto and watch YouTube/Netflix/TikTok ets. videos at the same time?

- Can not support wireless Android Auto and watch the videos at the same time

Whether to support the return touch function when using Video APP?

- Can not support return touch function.

What to do when operation is slow?

- Please click the Speed icon, clear cache and go to the settings system to try the reset related option.

What is the Wi-Fi password for the Wireless Android Auto Video Adapter?

- We need to connect the bluetooth, not Wi-Fi. After Bluetooth matching is successful, Wi-Fi will automatically connect. So no Wi-Fi password. Make sure your Wi-Fi is turned on and unoccupied when pairing.

After pairing the Android Auto Video adapter, can not start or compatible/ can not recognize the USB....?

- If your car has used the android auto function for the first time, please use your data cable to connect your phone to activate android auto through a wired method.
- Please make sure that android auto on your android phone is the last version. If not, please log in to your google play account to update to the latest version.
- Please turn off the bluetooth of your phone and enter the mobile application management to search auto to clear the auto cache. After the cleaning is completed, Restart the adapter and reconnect to bluetooth.

Audio input or output issues : calls rejected or forwarded to voicemail / no play sound / microphone not working / music playback interrupted or paused / voice functioning abnormally...?

- Please check if the Android smartphone's Bluetooth connects to other devices such as Earphone, watch.... or no automatic reconnect your vehicle bluetooth. If so, Please disconnect other auto-connected Bluetooth devices and connect to your vehicle bluetooth.
- When on a call, check that your "Audio" output option is Android Auto from your vehicle Bluetooth.

The indicator light of the adapter is still on after the car is turned off?

- Because the car does not cut off all power immediately when it is turned off, the adapter's light will not go out immediately, but it will take a while. Please rest assured that its power consumption is minimal and will not drain the car battery.

When using the wireless Android Auto Video Adapter whether Mobile Phone can use other internet WiFi?

- When enjoying the wireless android auto adapter function, the phone's WiFi will be occupied by the adapter. So you can not use the internet at the same time. You only can use your phone SIM card internet.

Unable to automatically reconnect?

- Please make sure that the Bluetooth and Wifi functions of your mobile phone are turned on and the Bluetooth is not occupied when you get in the car.
- Clear the pairing record, restart the phone and repair the adapter.

Can the adapter be paired with multiple android Smartphones?

- The adapter can be paired with a maximum of five phones, but only one device can be connected at a time. If you would like to pair it with a new phone, please cancel the current connection first. Please note, by Bluetooth function default, the adapter's system will only auto-connect back to the last used phone.

Can't find the bluetooth and Wi-Fi of the Android Auto Adapter?

- Please make sure wireless Android auto adapter power indicates blue light is on and Be sure plug the adapter into the port that is for wired Android auto.
- If convenient, Please test it with another Android Phone. If only a specific Android phone cannot find the Bluetooth or Wi-Fi of the adapter, please try to reset the network and bluetooth settings of this Phone and then restart the phone once, if the same problem happens on other Android Phone, It will be defective, please let us know.

Online update

1. Power up the adapter.
2. Open your Smartphone personal Hotspot or other WIFI support devices.
3. Click Video Icon and enter the setting page connected to your Smartphone personal hotspot or other WiFi.
4. Enter the setting page of the system then click 'System Updates' you can update the newest firmware.

Note: If the adapter works properly, it means the current version is suitable for your car. It is not recommended to update the firmware.